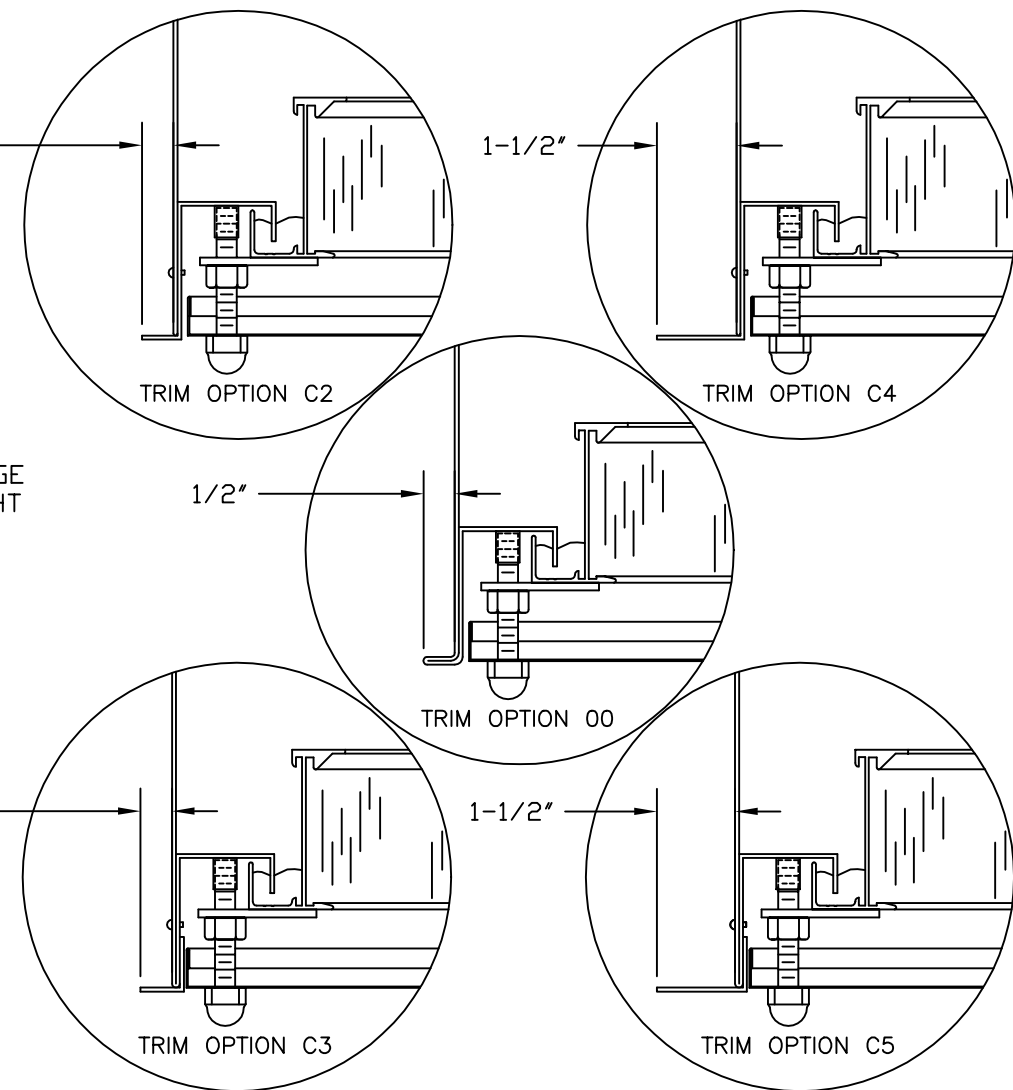
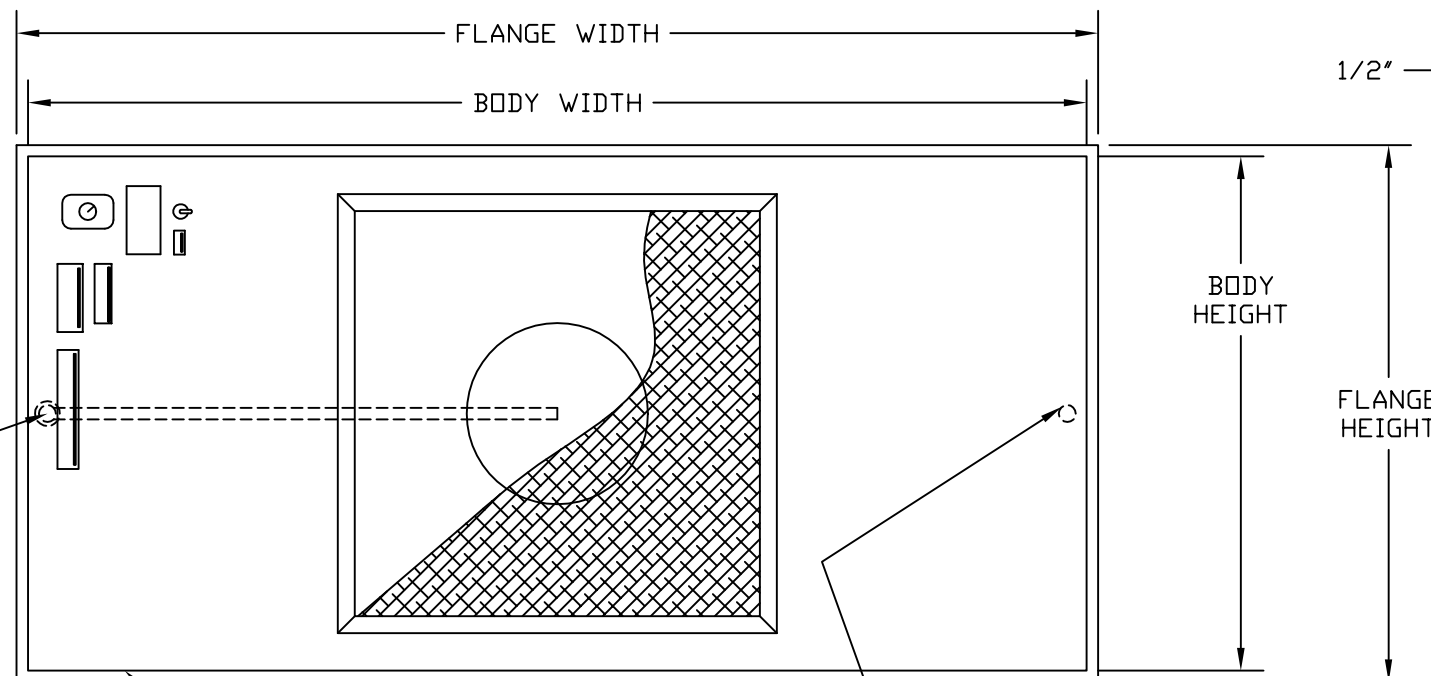


**HOOD CONSTRUCTION MATERIAL**

- 0.063" ALUMINUM
- T-304 STAINLESS STEEL
- T-304L STAINLESS STEEL
- T-316 STAINLESS STEEL
- T-316L STAINLESS STEEL

VARIOUS FINISHES AVAILABLE ON S/S



- AEROSOL INJECTION SYSTEM**
- 0 NONE
  - J 3/8" NPT PLUG
  - Q AEROSOL QUICK DISCONNECT
  - R AEROSOL & STATIC QUICK DISCONNECT

- BODY CODE AND SIZE**
- E1386 22-11/16" X 46-11/16"
  - E1286 22-11/16" X 22-11/16"

STATIC PORT  
SEE AEROSOL NOTE IF  
QUICK DISCONNECT IS REQUIRED

- BLOWER/MOTOR ASSEMBLY**
- 115V, 240W, 1PH, 60Hz
  - 230V, 240W, 1PH, 60Hz
  - 277V, 240W, 1PH, 60Hz

- INLET SIZE**
- STANDARD DUCT CONNECTION
  - 8"
  - 10"
  - 12"
  - 14"

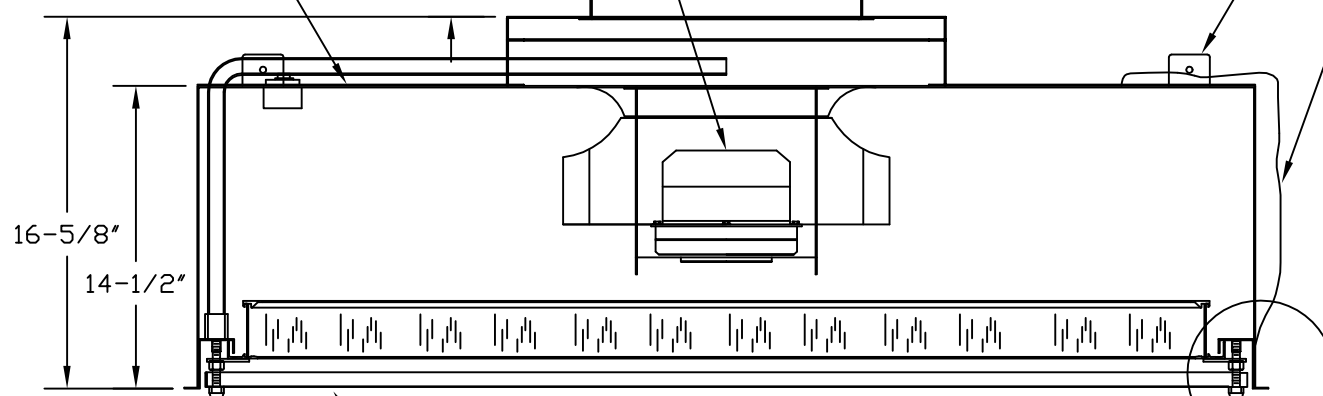
- FINISH**
- 0 BARE METAL
  - F HOOD POWDER PAINTED WHITE
  - T TRIM POWDER PAINTED WHITE

- HANGING TAB**
- 00 NONE
  - B1 ALUMINUM OR STAINLESS
  - B2 MOUNTING PADS

- TRIM STYLE**
- 00 1/2" PERMANENT FLANGE
  - C2 1/2" PERMANENT TRIM 18GA 304L #3 S/S
  - C3 1/2" REMOVABLE TRIM 18GA 304L #3 S/S
  - C4 1-1/2" PERMANENT TRIM 18GA 304L #3 S/S
  - C5 1-1/2" REMOVABLE TRIM 18GA 304L #3 S/S

- 2" FOIL BACKED INSULATION**
- 0 NONE
  - 1 TOP ONLY
  - 2 TOP & SIDES

\* 2" FILTER DEPTH ONLY



**SPECIFICATIONS**

1. POP RIVETED AND WELDED CONSTRUCTION.
2. LEAK PROOF FLUID SEAL BETWEEN THE FILTER AND THE CHANNEL-HOOD HOUSING.
3. BACK SIDE OF KNIFE-EDGE AND ANY INTERMITTENT WELDS ARE TO BE CAULKED WITH RTV SEALANT.
4. HOUSING IS TO BE CHECKED FOR FILTER FIT BEFORE LEAVING THE FACTORY.

- GRILLE**
- 00 NONE
  - SF S/S FLUSH 40% OPEN
  - SE S/S 2" EXTENDED 40% OPEN
  - SH S/S FLUSHED, HINGED W/PAWL FASTENER
  - CE CRS 2" EXTENDED 40% OPEN (PAINTED WHITE)
  - CF CRS FLUSH 40% OPEN (PAINTED WHITE)
  - AF ANODIZED ALUMINUM FLUSH 40% OPEN
  - AE ANODIZED ALUMINUM 2" EXTENDED 40% OPEN

ODD SIZE DESIGNATOR CHART		
HEIGHT	WIDTH	DEPTH

REV	DESCRIPTION	DATE	APPR.

THIS DRAWING AND THE INFORMATION CONTAINED THEREON IS THE PROPERTY OF FLANDERS FILTERS, INC. AND CANNOT BE REPRODUCED IN WHOLE OR IN PART, NOR DELIVERED TO OTHERS WITHOUT THE EXPRESS WRITTEN PERMISSION OF FLANDERS FILTERS, INC.

CUSTOMER: \_\_\_\_\_

CUSTOMER ORDER NO: \_\_\_\_\_

FLANDERS ORDER NO: \_\_\_\_\_

**FLANDERS FILTERS, INC**  
WASHINGTON, NORTH CAROLINA

DR: S. WINDLEY	DATE: 12/19/06	UNLESS OTHERWISE SPECIFIED DIMENSIONS ARE IN INCHES TOLERANCES ON FRACTIONS ± 1/16" DECIMALS _____ ANGLE _____
CK: _____		
APPR: _____		
SCALE: NTS		

TITLE: A39 GENERAL DRAWING	DRAWING NO. A39-SUBDWG
CADDNAME: _____	SH. _____
PLOT SCALE NTS	REV. 0