

General

K-Trac Filter Framing Modules are used for ASHRAE rated filters 2 in. to 36 in. in depth. K-Trac Modules are complete factory-designed units which replace multiple field-erected holding frames. They also provide inherent structural strength and leak-proof assembly that is sometimes lacking in frame-type installations.

K-Trac framing members are factory-cut to length, pre-drilled and gasketed for easy and quick assembly. Simple tools and light labor are all that is required. Filters are easily inserted or removed and require no clips or fasteners. Filters are angled into the upper track, then set into the lower track.

Versatility

K-Trac Filter Framing Modules are available in sizes up to a nominal 12 ft. high and 14 ft. wide for upstream or downstream service. Modules may be joined for larger banks. The 2 in. prefilter track accepts disposable or pleated prefilters for single-stage applications.

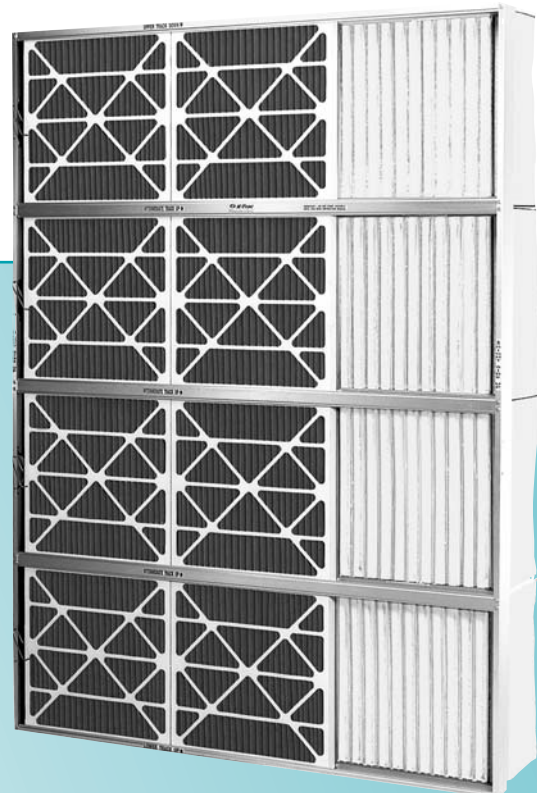
The primary filter track accommodates Precision Pak bag filters, Superflow V, or Rigid-Air filters, or other filters having nominal 1 in. thick headers.

Construction

K-Trac framing members are constructed of Type 6063-T5 mill-finish extruded aluminum. Clear anodizing is available as an option. Prefilter and primary filter tracks are factory-gasketed at the top and bottom with polypropylene pile air seals.

Side-to-side gasketing is furnished on the filter headers with every change. Side gaskets are compressed by a positive-sealing spring-loaded compression bar actuated by a sealing lever. The compression bar is retracted when loading or unloading filter elements.

Modules 8 ft. wide include one vertical support for the upstream side. Wider modules are furnished with vertical supports on the upstream and downstream sides. Sealing levers are located on the left side of each horizontal row when facing in the direction of air flow unless specified otherwise.



Important Features

- Provides substantial savings in field assembly
- Filters are tightly sealed to eliminate air bypass
- Filters can be replaced quickly and easily
- Modules are factory-engineered with built-in stiffening
- Construction is corrosion-resistant aluminum

Height Code	Overall Height	Face Velocity (fpm)	Height Code Overall											
			15W	20W	25W	30W	35W	40W	45W	50W	55W	60W	65W	70W
			Overall Width (in.)											
			36-1/16	48-1/16	59-7/16	71-7/16	82-13/16	94-13/16	106-13/16	118-13/16	129-9/16	141-9/16	152-15/16	164-15/16
10H	24-1/2	375	2250	3000	3750	4500	5250	6000	6750	7500	8250	9000	9750	10500
		500	3000	4000	5000	6000	7000	8000	9000	10000	11000	12000	13000	14000
		625	3750	5000	6250	7500	8750	10000	11250	12500	13750	15000	16250	17500
15H	36-15/16	375	3000	4500	5250	6750	7500	9000	9750	11250	12000	13500	14250	15750
		500	4000	6000	7000	9000	10000	12000	13000	15000	16000	18000	19000	21000
		625	5000	7500	8750	11250	12500	15000	16250	18750	20000	22500	23750	28250
20H	48-13/16	375	4500	6000	7500	9000	10500	12000	13500	15000	16500	18000	19500	21000
		500	6000	8000	10000	12000	14000	16000	18000	20000	22000	24000	26000	28000
		625	7500	10000	12500	15000	17500	20000	22500	25000	27500	30000	32500	35000
25H	61-1/4	375	5250	7500	9000	11250	12750	15000	16500	18750	20250	22500	24000	26250
		500	7000	10000	12000	15000	17000	20000	22000	25000	27000	30000	32000	35000
		625	8750	12500	15000	18750	21250	25000	27500	31250	33750	37500	40000	43750
30H	73-1/8	375	6750	9000	11250	13500	15750	18000	20250	22500	24750	27000	29250	31500
		500	9000	12000	15000	18000	21000	24000	27000	30000	33000	36000	39000	42000
		625	11250	15000	18750	22500	27250	30000	33750	37500	41250	45000	48750	52500
35H	85-9/16	375	7500	10500	12750	15750	18000	21000	23250	26250	28500	31500	33750	36750
		500	10000	14000	17000	21000	24000	28000	31000	35000	38000	42000	45000	48500
		625	12500	17500	21250	26250	30000	35000	38750	43750	47500	52500	56250	61250
40H	97-7/16	375	9000	12000	15000	18000	21000	24000	27000	30000	33000	36000	39000	42000
		500	12000	16000	20000	24000	28000	32000	36000	40000	44000	48000	52000	56000
		625	15000	20000	25000	30000	35000	40000	45000	50000	55000	60000	65000	70000
45H	109-7/8	375	9750	13500	16500	20250	23250	27000	30000	33750	36750	40500	43500	47250
		500	13000	18000	22000	27000	31000	36000	40000	45000	49000	54000	58000	63000
		625	16250	22500	27500	33750	38750	45000	50000	56250	61250	67500	72500	78750
50H	121-3/4	375	11250	15000	18750	22500	27250	30000	33750	37500	41250	45000	48750	52500
		500	15000	20000	25000	30000	35000	40000	45000	50000	55000	60000	65000	70000
		625	18750	25000	31250	37500	43750	50000	56250	62500	68750	75000	81250	87500
55H	134-3/16	375	12000	16500	20250	24750	28500	33000	36750	41250	45000	49500	53250	57750
		500	16000	22000	27000	33000	38000	44000	49000	55000	60000	66000	71000	77000
		625	20000	27500	33750	41250	47500	55000	61250	68750	75000	82500	88750	96250
60H	146-1/16	375	13500	18000	22500	27000	31500	36000	40500	45000	49500	54000	58500	63000
		500	18000	24000	30000	36000	42000	48000	54000	60000	66000	72000	78000	84000
		625	22500	30000	37500	45000	52500	60000	67500	75000	82500	90000	97500	105000

1. Height and Width Code: The first numeral represents the number of 24 in. x 24 in. filters high or wide. If 24 in. x 12 in. filters are also used in the height or width, the second numeral is "5".
2. Dimensions are based on using nominal size 24 in. x 24 in. and 24 in. x 12 in. filters. Select filters from capacity charts for Precision Pak bag filters or single-headered PrecisionCell or Rigid-Air filters.
3. Sizes using 24 in. x 12 in. filters in both height and width require a 12 in. x 12 in. blankoff; for example, a KT- 15H35W has a 20 sq. ft. available, not 21 sq. ft.
4. For capacities other than those shown, ratio the face velocities.

Model Number Development:



- Height and Width Code: The first numeral represents the number of 24 in. x 24 in. filters high or wide. If 24 in. x 12 in. filters are also used in the height or width, the second numeral is "5".
- Service Location: U (upstream) or D (downstream).
- Lever Location: L (left side) or R (right side) when facing in the direction of airflow (air directed at your back).
- For special features or sizes: Use Suffix "X" and describe them.

KT-20H35W-ULX

This example represents a K-Trac module, 2 filters high and 3-1/2 filters wide, upstream service and left side levers. The letter X indicates that special features are required.

How the K-Trac Works



Quick and easy assembly with a ratchet wrench



Assembled module



Installing filters and prefilters



Spring-loaded sealing levers actuate pressure bars on both the prefilter and primary filter.

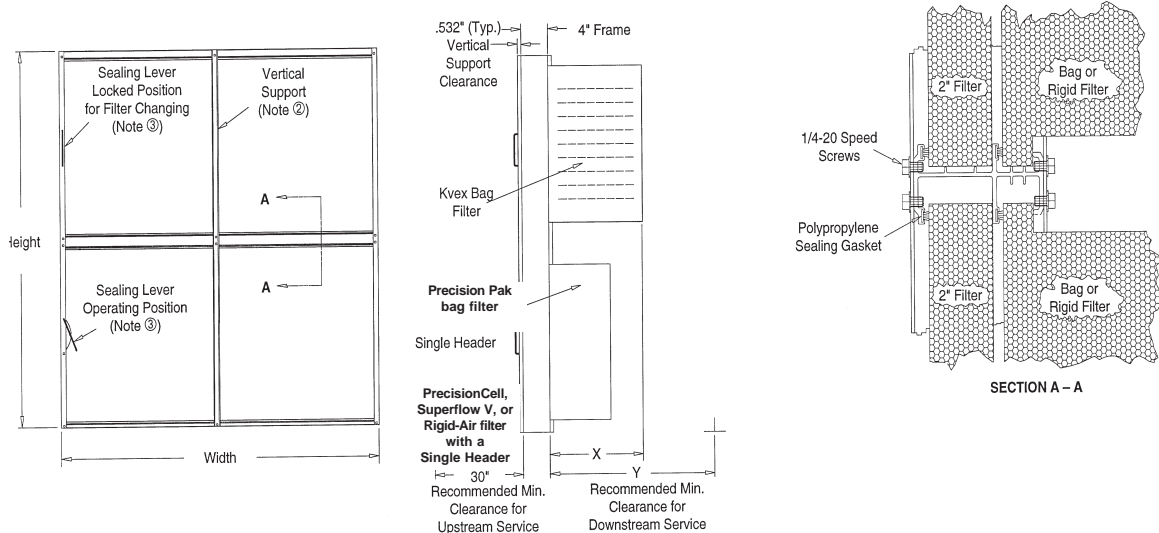


Filters with poly-foam side gasket prevent leaking between adjacent filters

Filter Usage and Module Weight

Height Code	Filters Weight (lbs.)	Width Code											
		15W	20W	25W	30W	35W	40W	45W	50W	55W	60W	65W	70W
10H	Filters Weight	1A-1C 10	2A 13	2A-1C 15	3A 17	3A-1C 19	4A 22	4A-1C 24	5A 26	5A-1C 28	6A 31	6A-1C 33	7A 35
15H	Filters Weight	1A-2C 18	2A-2C 22	2A-3C 26	3A-3C 30	3A-4C 34	4A-4C 38	4A-5C 42	5A-5C 46	5A-6C 50	6A-6C 54	6A-7C 58	7A-7C 62
20H	Filters Weight	2A-2C 19	4A 23	4A-2C 27	6A 31	6A-2C 35	8A 39	8A-2C 43	10A 47	10A-2C 51	12A 55	12A-2C 59	14A 63
25H	Filters Weight	2A-3C 26	4A-2C 32	4A-4C 38	6A-3C 44	6A-5C 49	8A-4C 55	8A-6C 61	10A-5C 67	10A-7C 72	12A-6C 78	12A-8C 84	14A-7C 90
30H	Filters Weight	3A-3C 28	6A 34	6A-3C 39	9A 45	9A-3C 51	12A 57	12A-3C 62	15A 68	15A-3C 74	18A 79	18A-3C 85	21A 91
35H	Filters Weight	3A-4C 35	6A-2C 43	6A-5C 50	9A-3C 58	9A-6C 65	12A-4C 73	12A-7C 80	15A-5C 88	15A-8C 95	18A-6C 102	18A-9C 110	21A-7C 117
40H	Filters Weight	4A-4C 37	8A 44	8A-4C 52	12A 59	12A-4C 66	16A 74	16A-4C 81	20A 89	20A-4C 96	24A 104	24A-4C 111	28A 119
45H	Filters Weight	4A-5C 44	8A-2C 53	8A-6C 62	12A-3C 72	12A-7C 81	16A-4C 90	16A-8C 99	20A-5C 108	20A-9C 118	24A-6C 127	24A-10C 136	28A-7C 145
50H	Filters Weight	5A-5C 45	10A 55	10A-5C 64	15A 73	15A-5C 82	20A 91	20A-5C 101	25A 110	25A-5C 119	30A 128	30A-5C 137	35A 147
55H	Filters Weight	5A-6C 53	10A-2C 64	10A-7C 75	15A-3C 86	15A-8C 97	20A-4C 107	20A-9C 118	25A-5C 129	25A-10C 140	30A-6C 151	30A-11C 162	35A-7C 173
60H	Filters Weight	6A-6C 54	12A 65	12A-6C 76	18A 87	18A-6C 98	24A 109	24A-6C 120	30A 131	30A-6C 142	36A 153	36A-6C 164	42A 175

- A= 24 in. x 24 in. face size filter. C = 24 in. x 12 in. face size filter.
- Weight does not include filters. Add approximately 6 lbs. per Precision Pak bag filter, 20 lbs. per PrecisionCell filter, 17 lbs. per Superflow V filter, and 17 lbs. per Rigid-Air filter.



Drawing Notes

1. Framing members of extruded aluminum are factory-cut to exact length, pre-drilled and gasketed.
2. One vertical support for the center of the upstream side will be furnished on modules nominal 8 ft. wide. Wider modules will be furnished with vertical supports on both the upstream and downstream sides.
3. Sealing levers are located at the end of each horizontal row on the left when facing the module on the upstream side unless specified on the right or on the downstream side.
4. The largest single module is 12 ft. high by 14 ft. wide. Modules may be combined to form larger banks.

Installation of Final Filters:

1. Install gasketed filters with pleats vertical wherever possible.
2. Place sealing lever in locked position and hold filter on the downstream side of the module.
3. Insert the top of the filter into the upper narrow track until it clears the lower flange.
4. Drop the filter into the bottom narrow track. Fill the row with filters, moving them to the side opposite the sealing lever.
5. Unlock the lever to seal the row airtight.

Guide Specifications

1.0 Framing Modules

- 1.1 Filter framing modules shall be K-Trac as manufactured by Flanders, Inc.

2.0 Construction

- 2.1 Extruded aluminum framing members shall be Type 6063-T5, with an average thickness of .095 in. They shall be cut to size and drilled for simple speed screw assembly into modules of the sizes noted in the schedules and plans.
- 2.2 Both prefilter and final filter tracks shall be permanently gasketed to eliminate air bypass.
- 2.3 Where required, vertical support members shall be furnished to support horizontal members.

- 2.4 The prefilter track shall be separate to allow removal and insertion of prefilters without disturbing the final filters.

- 2.5 Each horizontal row of prefilters and final filters shall include factory-installed positive-sealing bars to permit easy changeout of filters. Gasket on filters must be compressed during operation.

- 2.6 Modules shall be complete with speed-screws necessary for field assembly.

3.0 Features

- 3.1 Model number and capacities shall be as specified and/or shown on the drawings.
- 3.2 Provide options as specified.

Flanders/FFI®

Flanders Filters, Inc.
531 Flanders Filter Road
Washington, NC 27889

Phone: (252) 946-8081
Toll Free: (800) 637-2803
Fax: (252) 946-3425

REPRESENTED BY: