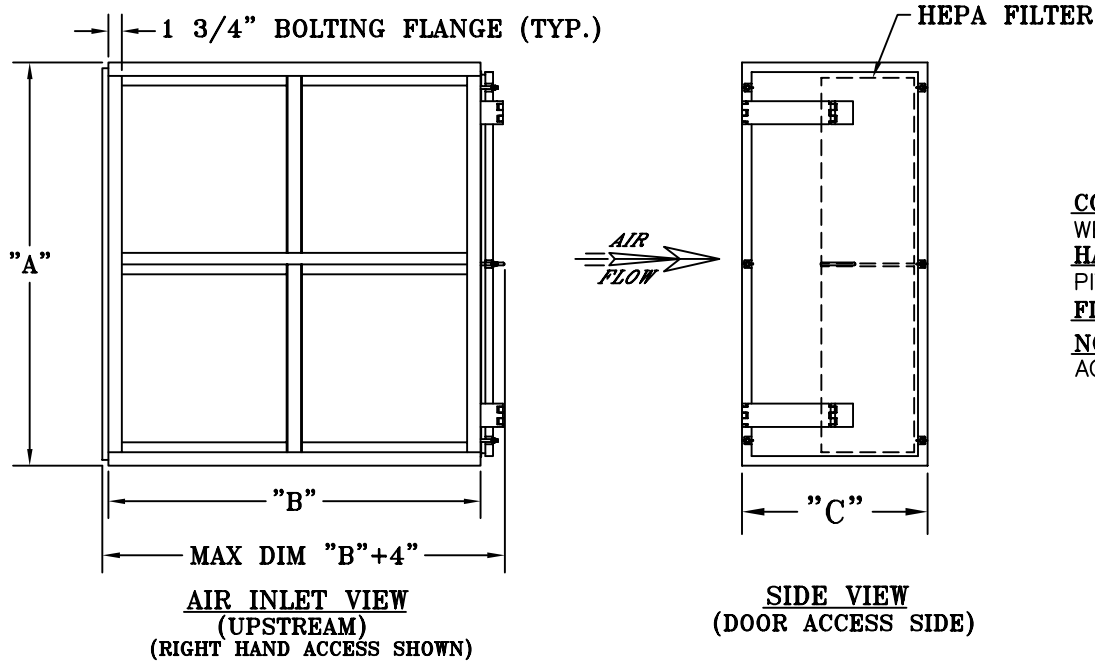


QTY REQ'D	EQUIPMENT MODEL NO.	HEIGHT "A"	WIDTH "B"	DEPTH "C"	PRIMARY FILTER SIZE (ACTUAL)	FILTER QTY	CAPACITY (CFM)	APPROX. WEIGHT
	C3G-1H1W-CCF- * -D1	15 3/4"	12 1/8"	24"	12"x12"x11 1/2"	1	250	70 lbs.
	C3G-1H1W-CGF- * -D1	15 3/4"	24 1/8"	24"	12"x24"x11 1/2"	1	500	95 lbs.
	C3G-1H1W-GCF- * -D1	27 3/4"	12 1/8"	24"	24"x12"x11 1/2"	1	500	95 lbs.
	C3G-1H1W-GGF- * -D1	27 3/4"	24 1/8"	24"	24"x24"x11 1/2"	1	1000	120 lbs.
	C3G-1H2W-GGF- * -D1	27 3/4"	48 1/8"	24"	24"x24"x11 1/2"	2	2000	175 lbs.
	C3G-1H3W-GGF- * -D1	27 3/4"	72 1/8"	24"	24"x24"x11 1/2"	3	3000	230 lbs.
	C3G-2H1W-GGF- * -D1	52 1/8"	24 1/8"	24"	24"x24"x11 1/2"	2	2000	190 lbs.
	C3G-2H2W-GGF- * -D1	52 1/8"	48 1/8"	24"	24"x24"x11 1/2"	4	4000	300 lbs.
	C3G-2H3W-GGF- * -D1	52 1/8"	72 1/8"	24"	24"x24"x11 1/2"	6	6000	410 lbs.
	C3G-3H1W-GGF- * -D1	76 1/2"	24 1/8"	24"	24"x24"x11 1/2"	3	3000	290 lbs.
	C3G-3H2W-GGF- * -D1	76 1/2"	48 1/8"	24"	24"x24"x11 1/2"	6	6000	430 lbs.
	C3G-3H3W-GGF- * -D1	76 1/2"	72 1/8"	24"	24"x24"x11 1/2"	9	9000	570 lbs.
	C3G-4H1W-GGF- * -D1	100 7/8"	24 1/8"	24"	24"x24"x11 1/2"	4	4000	390 lbs.
	C3G-4H2W-GGF- * -D1	100 7/8"	48 1/8"	24"	24"x24"x11 1/2"	8	8000	560 lbs.
	C3G-4H3W-GGF- * -D1	100 7/8"	72 1/8"	24"	24"x24"x11 1/2"	12	12000	730 lbs.

* 304, 304L, 316, 316L OR GLV CONSTRUCTION (SEE STANDARD OPTIONS)

STANDARD OPTIONS (IF APPLICABLE)


- 304 SST 304L SST 316 SST 316L SST GLV STEEL MATERIAL: 14 & 11 GA CONSTRUCTION (SPECIFY TYPE)
NOTE: STANDARD MATERIAL IS GLV STEEL
- PLAIN OR FACTORY DRILLED INLET/OUTLET DUCT CONNECTION FLANGES (FOR DETAILS SEE DSA-088)
- REMOVABLE OR WELDED WEATHERCAP (MATERIAL SAME AS THE HOUSING, ADDS 1" TO OVERALL HEIGHT)
- STATIC PRESSURE TAPS LOCATED ON TOP OR BACK (SIZED FOR 1/4" O.D. TUBING)
- LOOSE OR FACTORY INSTALLED WEATHERPROOF DIFFERENTIAL PRESSURE GAGE(S) (LOOSE GAGES ARE SUPPLIED WITH INSTALLATION KITS) RANGE/FILTER = _____ / _____
(FACTORY INSTALLED GAGE ADD 8" TO "A" DIM.)
- LIFTING LUGS (ADD 3" TO "B" DIM.)
- DIRECTION OF ACCESS: RIGHT LEFT (OWNER TO SPECIFY)
- HEPA FILTER(S) MODEL # = _____
- OTHER OPTIONS _____



GENERAL NOTES

- CONSTRUCTION:** PRESSURE BOUNDARY WELDS ARE INTERMITTENTLY WELDED AND CAULKED.
- HARDWARE:** ALL HARDWARE IS 300 SERIES SST EXCEPT FOR BRASS PIVOT BLOCKS IN LOCKING MECHANISM.
- FILTER SEAL:** GASKET SEAL
- NOTE:** A MINIMUM OF FOUR (4) FEET CLEARANCE IN FRONT OF THE ACCESS DOOR IS RECOMMENDED FOR FILTER CHANGE-OUT.

CUSTOMER: _____
 CUSTOMER PO NO.: _____
 USER: _____
 FLANDERS/CSC JOB NO.: _____

DRAWN BY T. SPRUILL	DATE 2/10/03	 FLANDERS/CSC CORPORATION BATH, NORTH CAROLINA		
CHECKED BY	DATE			
APPROVED BY	DATE			
DRAWING NUMBER DSA-56		SHEET 1	OF 1	REV. 0

REV.	DR.	DATE	DESCRIPTION	CHECK	DATE	APPR.	DATE